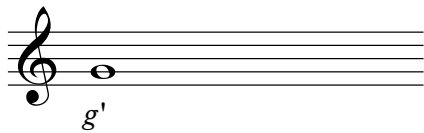
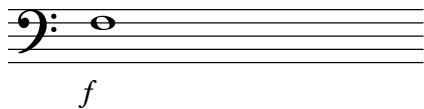


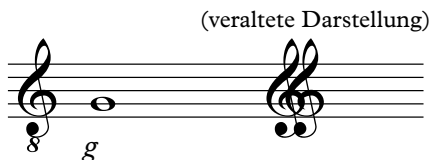
Notenschlüssel



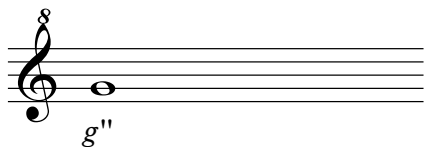
Violin- bzw. G-Schlüssel



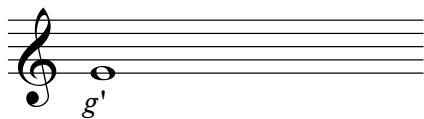
Bass- bzw. F-Schlüssel



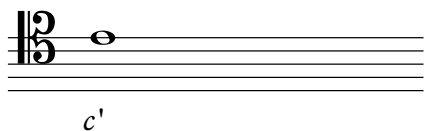
Violin- bzw. G-Schlüssel (1 Oktave tiefer)



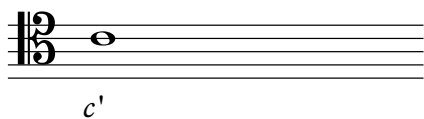
Violin- bzw. G-Schlüssel (1 Oktave höher)



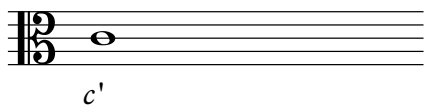
Französischer Violin- bzw. G-Schlüssel



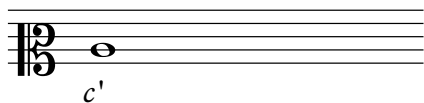
C-Schlüssel - Bariton



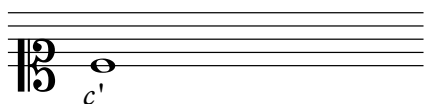
C-Schlüssel - Tenor



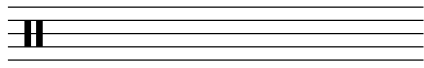
C-Schlüssel - Alt



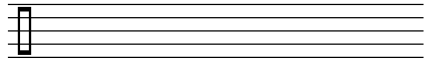
C-Schlüssel - Mezzosopran



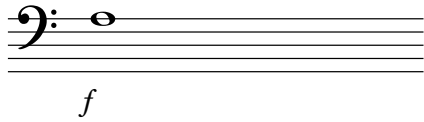
C-Schlüssel - Sopran



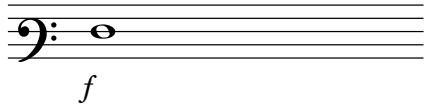
Schlagzeug-Notenschlüssel /
Percussionsschlüssel



Schlagzeug-Notenschlüssel /
Percussionsschlüssel



Sub-Bass



Bariton-Bass

„italienischer“ Tenorschlüssel Klang

Mu - si - ca Mu - si - ca